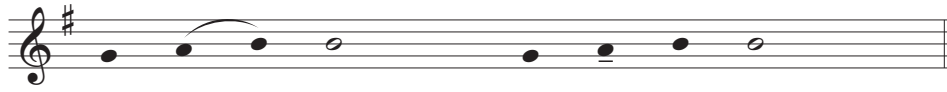


Kyrie eleison

Missa XVI

C. Gregoriano
Polifonia: Manuel Simões



Ky - ri - e e - le - i - son.

Larghetto

S. A. T. B.

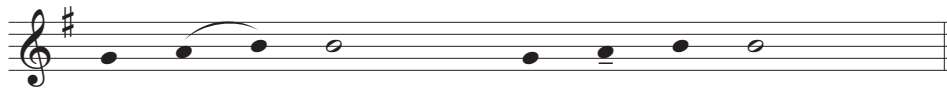
Musical notation for the first polyphonic system, Soprano (S.) and Alto (A.) parts. The Soprano part is in G major and 2/4 time, with lyrics: Ky - ri - e e - le - i - son. The Alto part is in G major and 2/4 time, with lyrics: Ky - ri - e e - le - i - son. The system includes a Tenor (T.) and Bass (B.) part with lyrics: Ky - ri - e e - le - i - son.



Chri - ste e - le - i - son.

S. A. T. B.

Musical notation for the second polyphonic system, Soprano (S.) and Alto (A.) parts. The Soprano part is in G major and 3/4 time, with lyrics: Chri - ste e - le - i - son. The Alto part is in G major and 3/4 time, with lyrics: Chri - ste e - le - i - son. The system includes a Tenor (T.) and Bass (B.) part with lyrics: Chri - ste e - le - i - son. The system includes a Tenor (T.) and Bass (B.) part with lyrics: Chri - ste e - le - i - son.



Ky - ri - e e - le - i - son.

S. A. T. B.

Musical notation for the fourth polyphonic system, Soprano (S.) and Alto (A.) parts. The Soprano part is in G major and 2/4 time, with lyrics: Ky - ri - e e - le - i - son. The Alto part is in G major and 2/4 time, with lyrics: Ky - ri - e e - le - i - son. The system includes a Tenor (T.) and Bass (B.) part with lyrics: Ky - ri - e e - le - i - son. The system includes a Tenor (T.) and Bass (B.) part with lyrics: Ky - ri - e e - le - i - son.